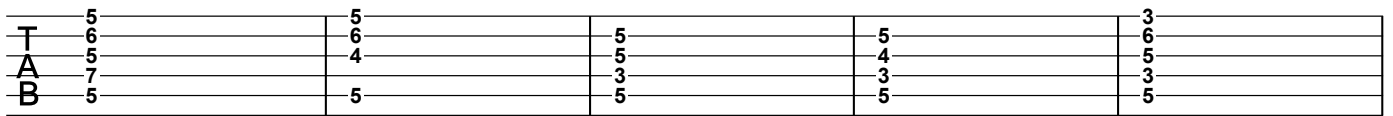
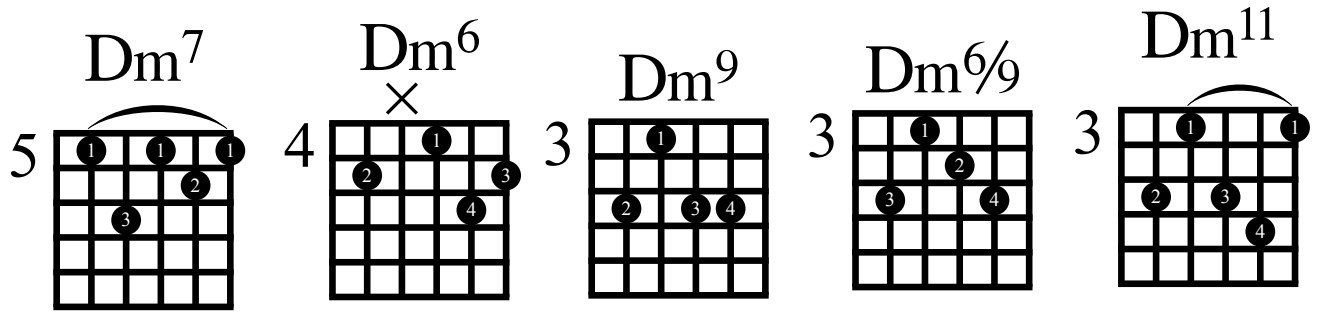
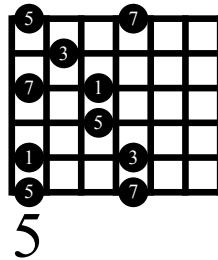


Minor Chord Family Region 1

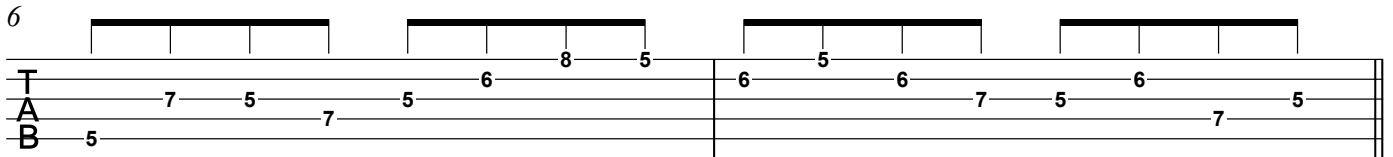


- The numbers in the arpeggio diagrams represent that notes scale degree.
MEMORIZE THEM!!

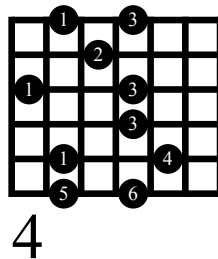
Minor 7th Arpeggio



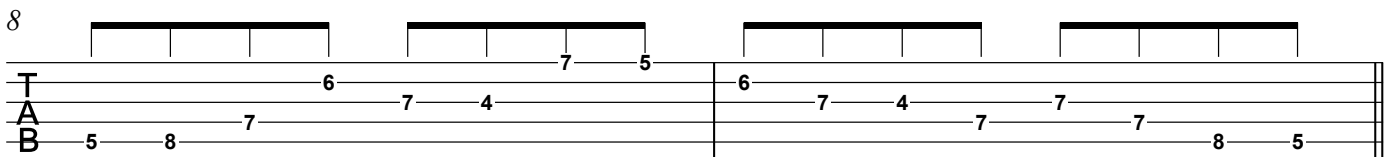
- Run using Minor 7th chord tones



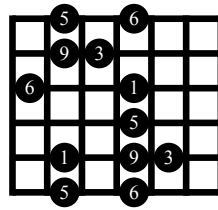
Minor 6th Arpeggio



- Run using Minor 6th chord tones



Minor 6/9 Arpeggio

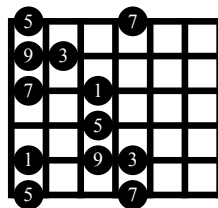


- Run using Minor 6/9 chord tones

4

10

Minor 9th Arpeggio

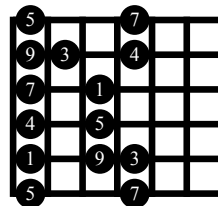


- Run using Minor 9th chord tones

5

12

Minor 11th Arpeggio



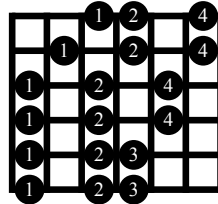
* 4th & 11th are the same note

- Run using Minor 11th chord tones

5

14

Dorian Scale Form Using The Scale Shape Built From The 6th



- Run using notes from the Dorian
Mode/Scale

5

16

T
A
B

- Practice these runs with an 8th note swing feel over any of the minor 7th chords found in the chord progression on the backing track.
- After you feel comfortable, start to create your own runs and improvisations over the backing track using the arpeggio and scale forms you learned in this and previous lessons.