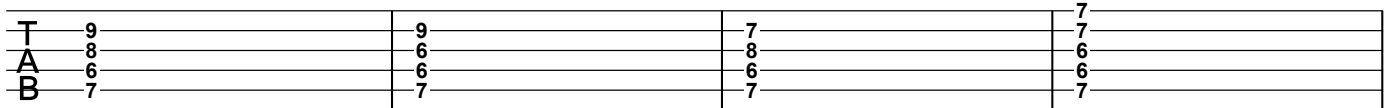


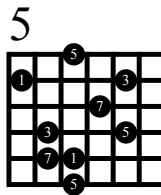
Major Chord Family Group 1

Region 2

Memorizing these chords from Group 1 will help you memorize the arpeggios



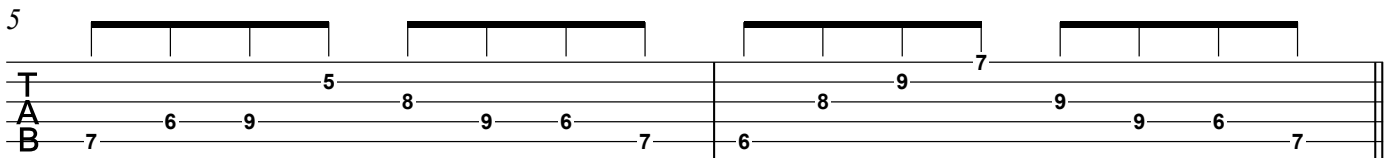
Major 7th Arpeggio



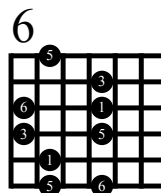
* The numbers in the arpeggio diagrams represent the scale degree.

MEMORIZE THIS!!

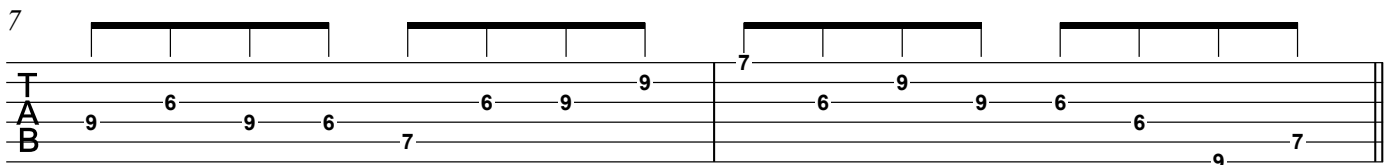
-Run using Major 7th Arp./Chord Tones



Major 6th Arpeggio

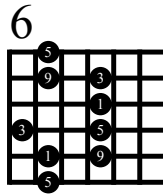


-Run using Major 6th Arp./Chord Tones

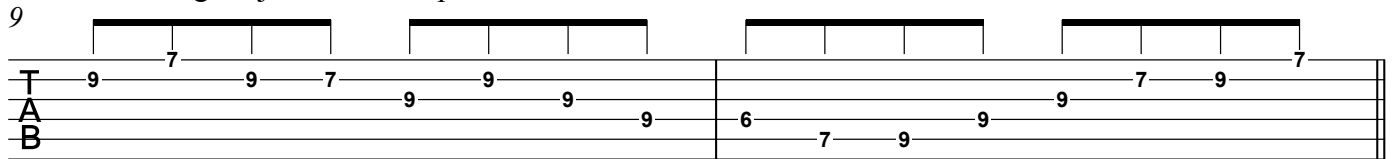


2

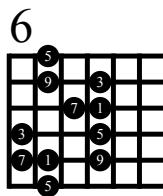
Major add 9th Arpeggio



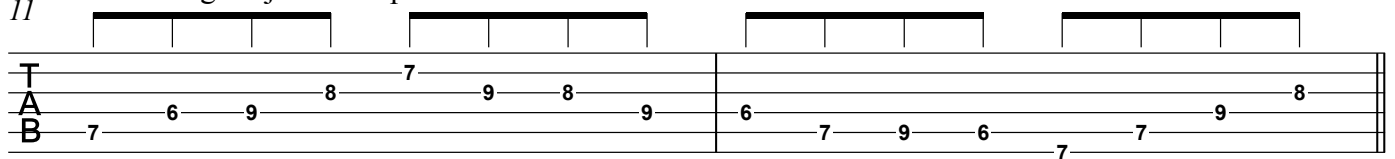
-Run using Major add 9th Arp./Chord Tones



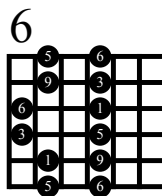
Major 9th Arpeggio



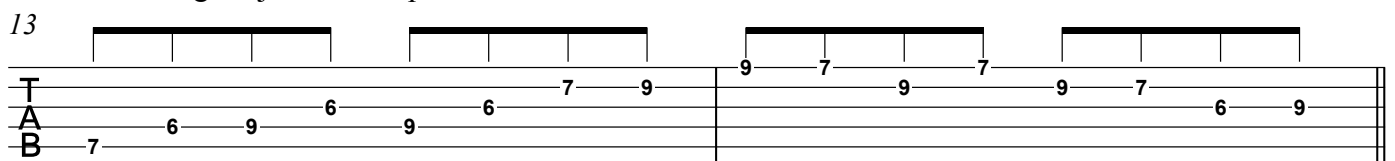
-Run using Major 9th Arp./Chord Tones



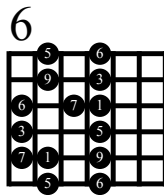
Major 6/9th Arpeggio



-Run using Major 6/9th Arp./Chord Tones



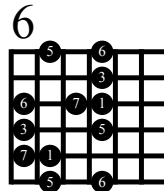
Major 13th Arpeggio



-Run using Major 13th Arp./Chord Tones

15

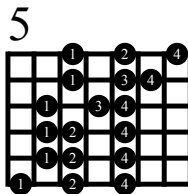
Major 7/6th Arpeggio



-Run using Major 7/6th Arp./Chord Tones

17

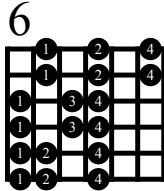
Major Scale



-Run using Major Scale with Chord Tones

19

Lydian Scale/Mode



-Run using Lydian Mode with Chord Tones

21